

MANUAL FLANGE FACER

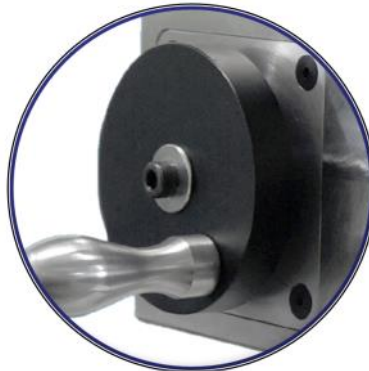
1.25" - 14" MANUAL FLANGE MILL



The **MFM Manual Flange Mill** is a simple and cost-effective solution for ID mount flange facing. It is a quick and easy way to recondition damaged or worn flange gasket seats to like-new condition on site.

It is designed and built to allow quick and convenient processing of small flanges in awkward locations and produces a precise phonographic finish.

Being hand operated, without the need for any form of power supply, it is ideal for hazardous areas or remote locations.



MODEL	CLAMPING RANGE		FACING RANGE		TOOL TRAVEL	MAX SWING DIAMETER
Manual Flange Mill	25.4mm	254.0mm	30mm	350mm	V: 10mm H: 55mm	457.2mm
	1"	10"	1.25"	14"	V: 0.395" H: 2.165"	18"

+44 (0) 23 8036 6410

tuberunner@bsa-regal.co.uk



www.tuberunner.co.uk